

APPENDIX



**EXISTING CONDITIONS
AND OPPORTUNITIES
REPORT MAPS**

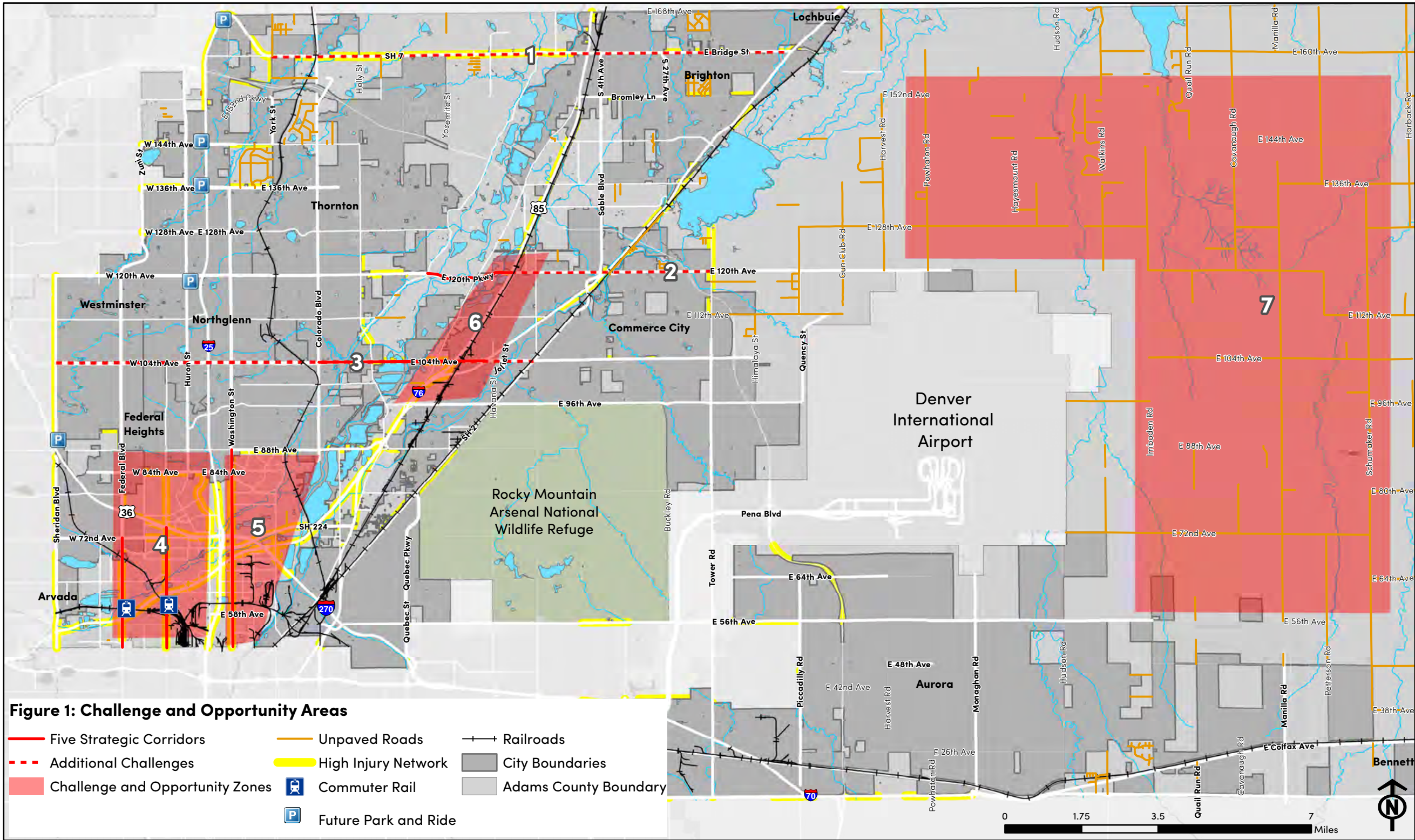
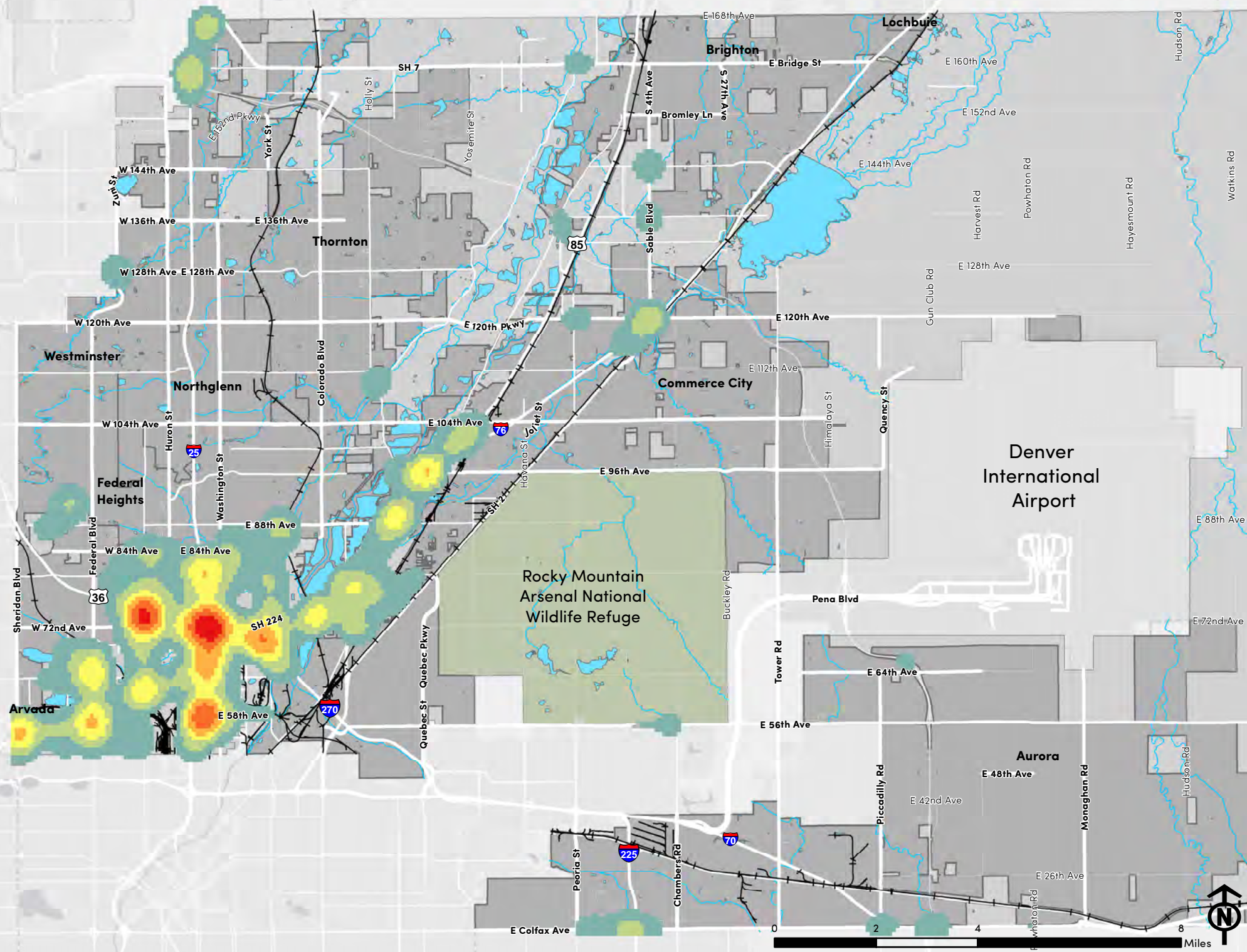
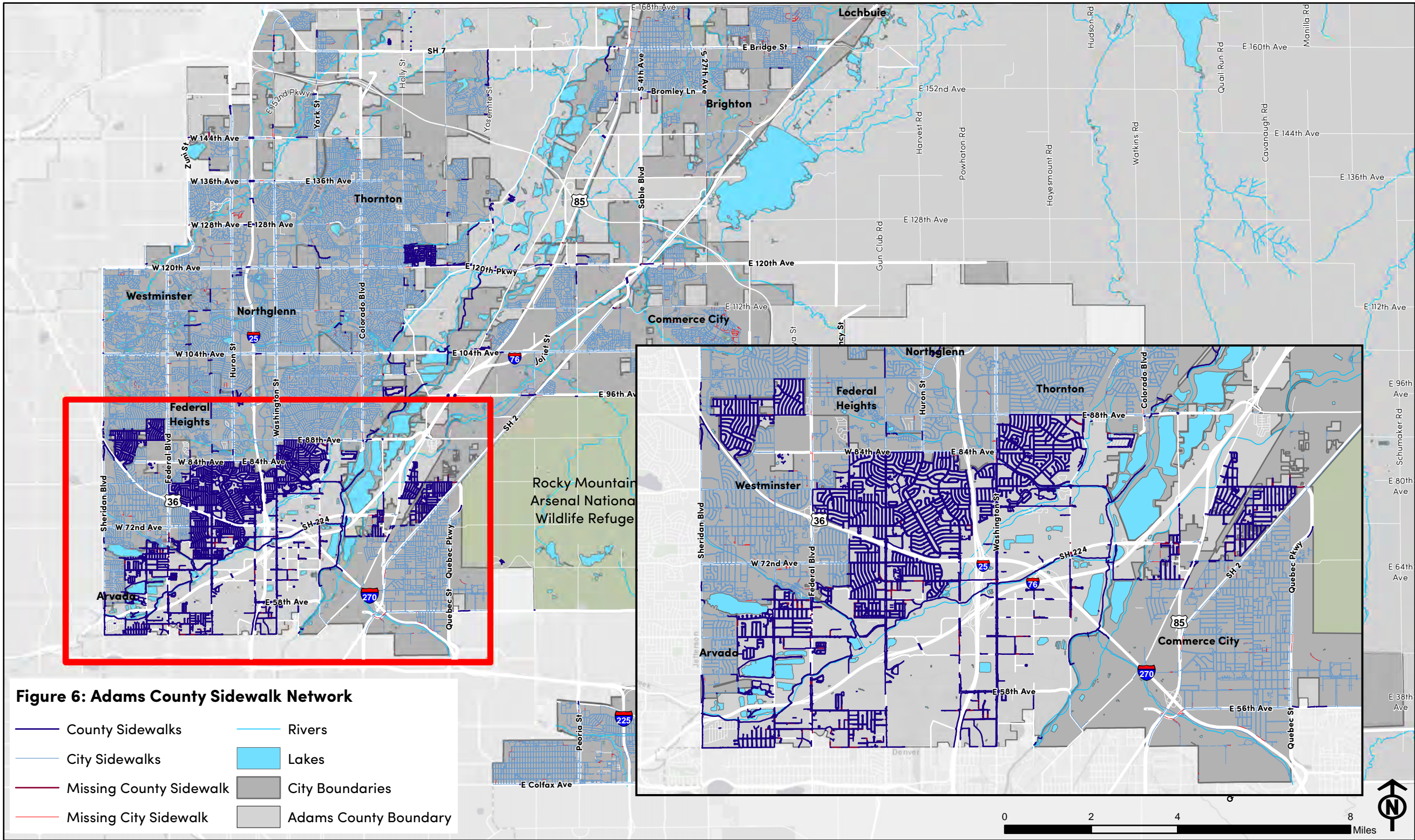


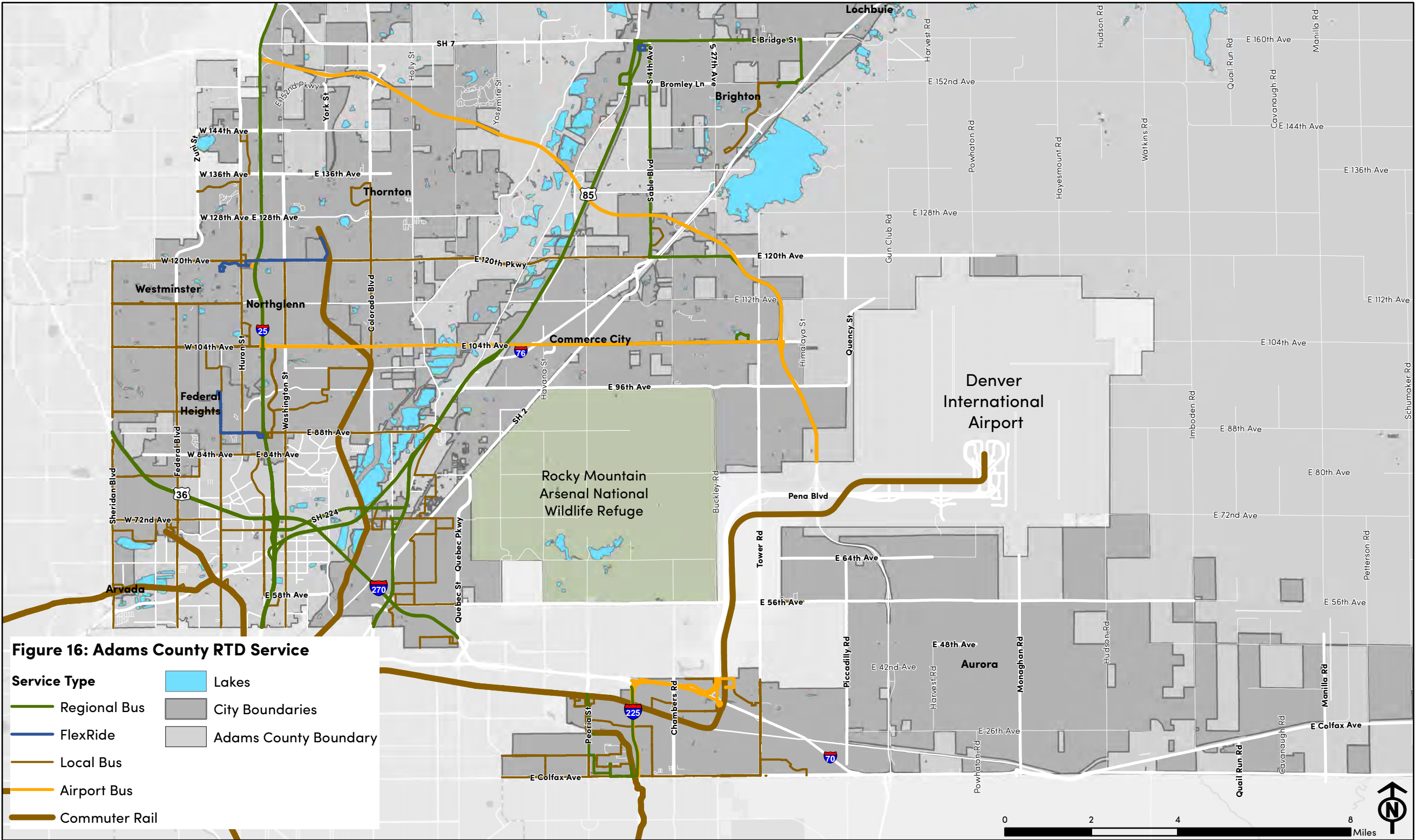
Figure 2: Top Crash Locations in Unincorporated Adams County

2013 - 2018 Crashes

- Very Few Crash Incidents
- Up to 350 Crashes
- 351 - 700
- 701 - 1,200
- 1,201 - 1,900
- 1,901 - 2,800
- 2,801 - 3,900 Crashes
- Railroads
- City Boundaries
- Adams County Boundary







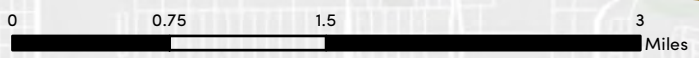
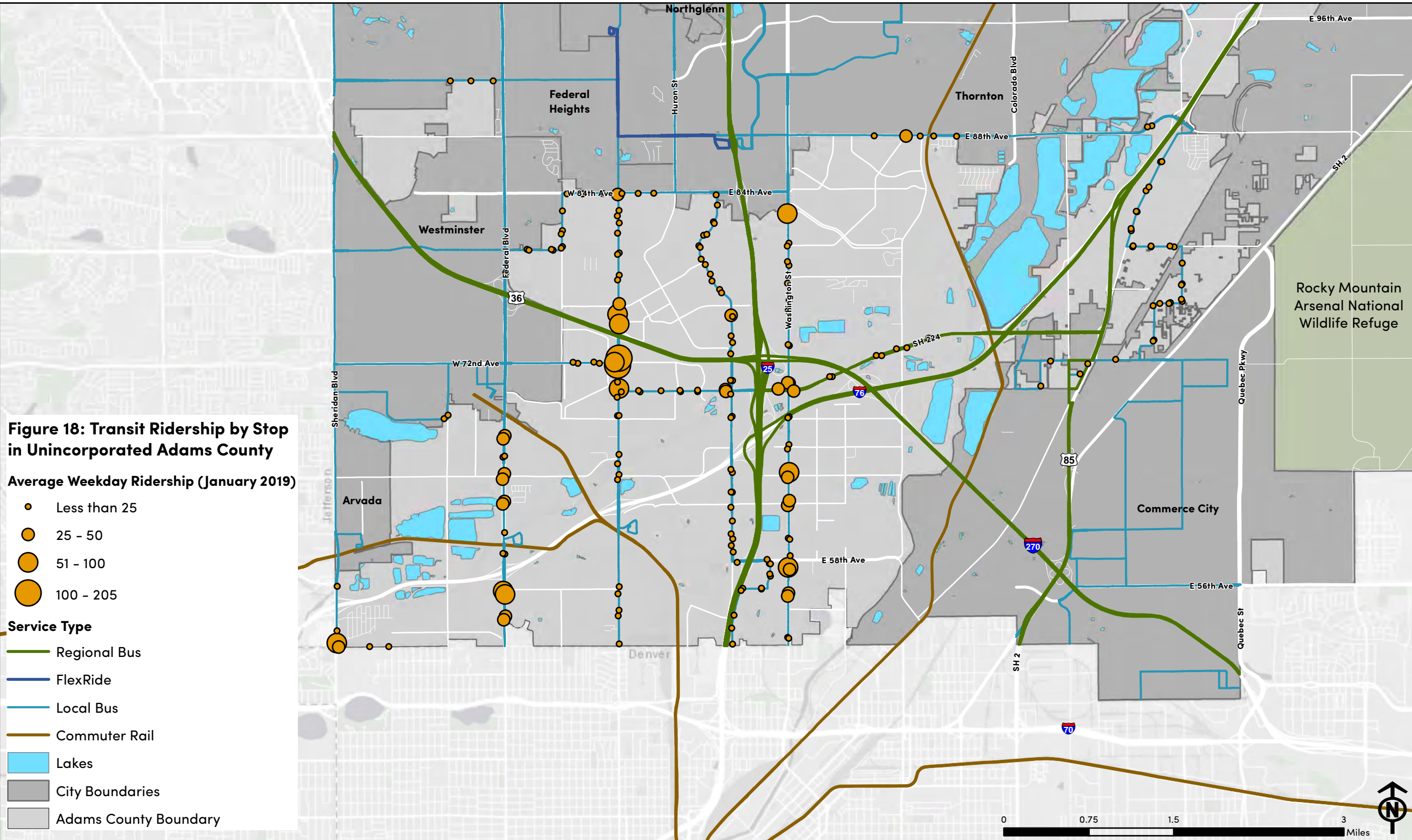
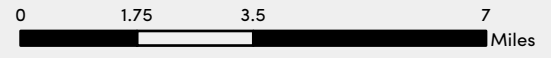




Figure 20: Existing Adams County Roadway Network (Eastern Portion of County)

- Freeway
- Rural Arterial
- Collector
- City Boundaries
- Principal Arterial
- Section Line Arterial
- Private
- Adams County Boundary



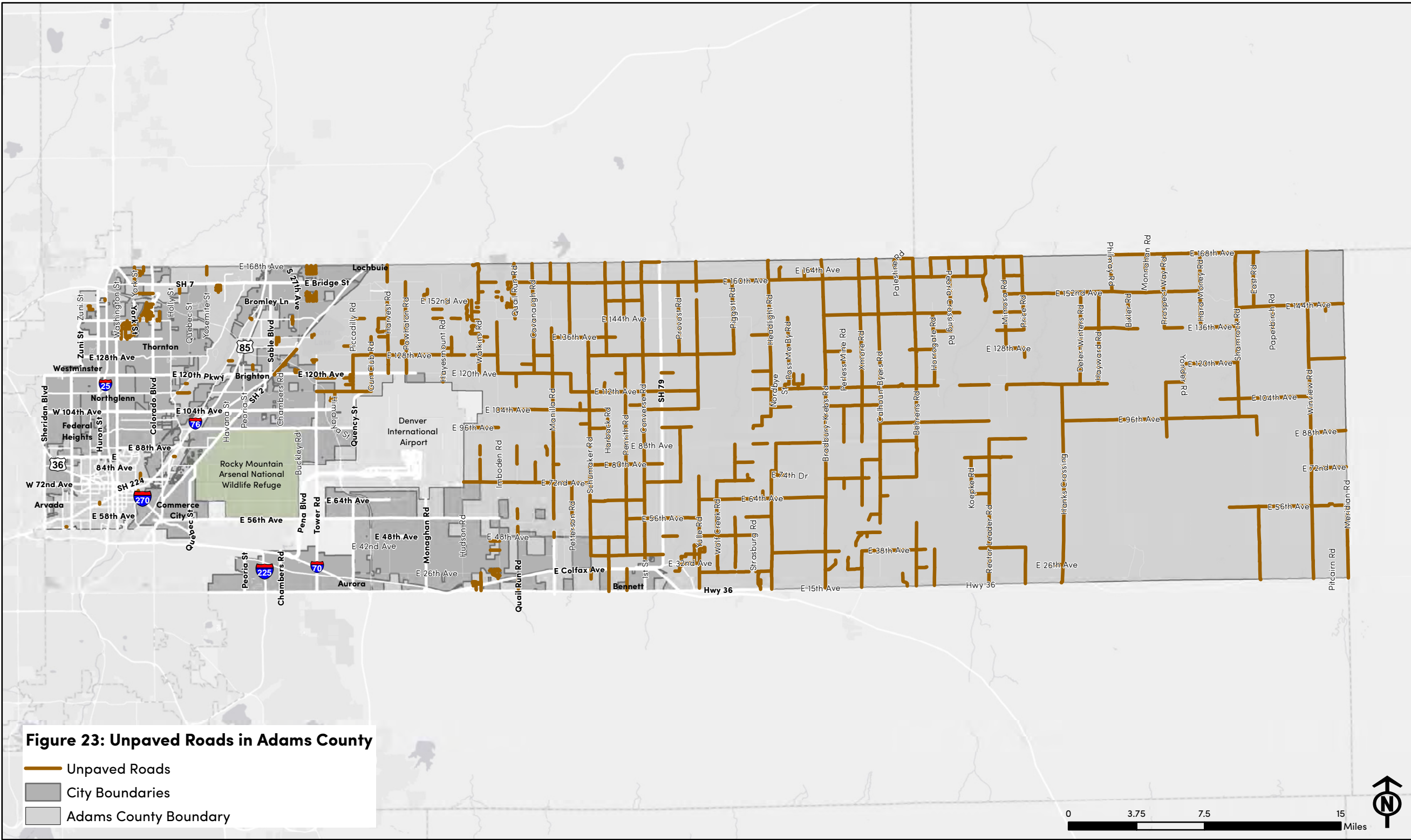
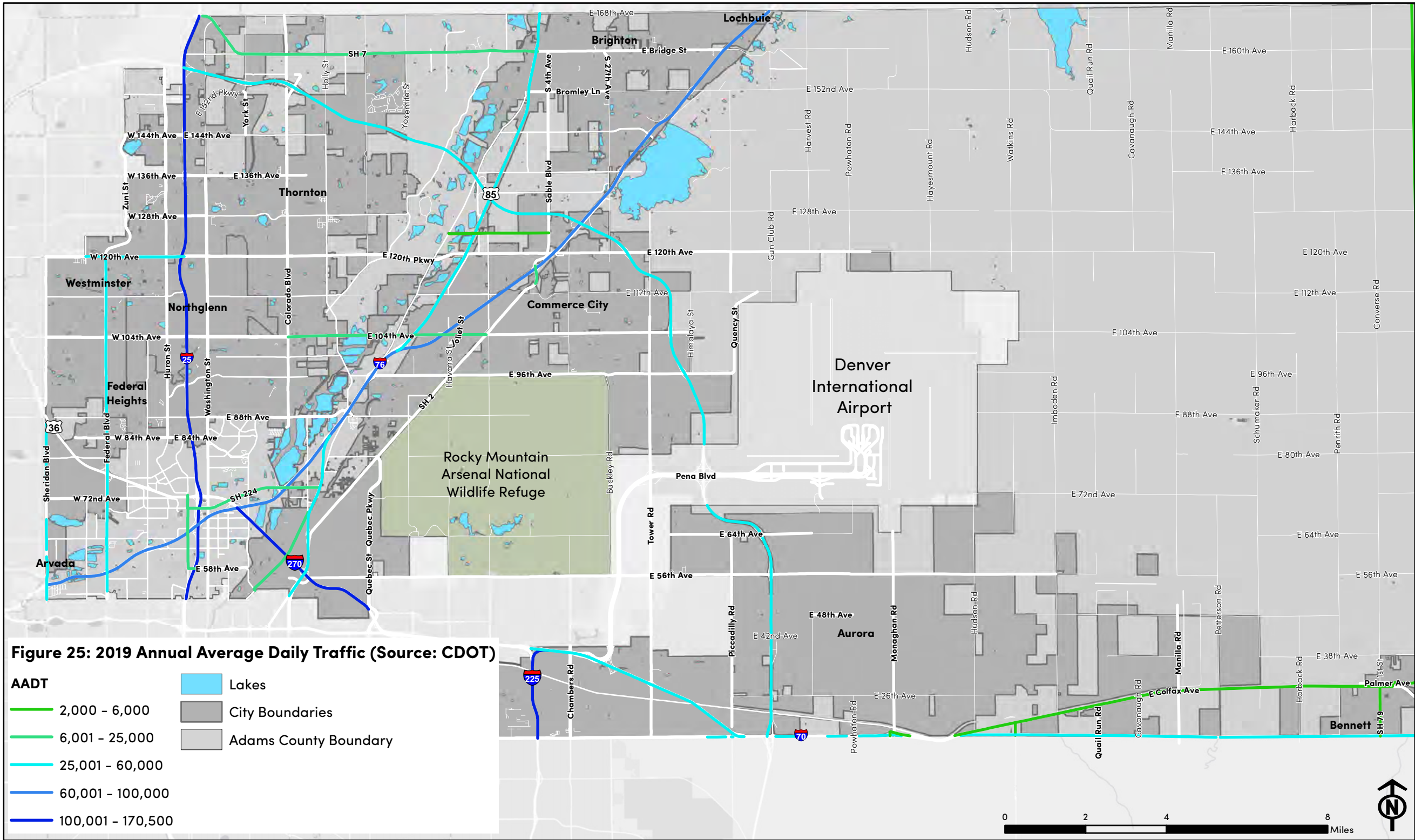


Figure 23: Unpaved Roads in Adams County

- Unpaved Roads
- City Boundaries
- Adams County Boundary





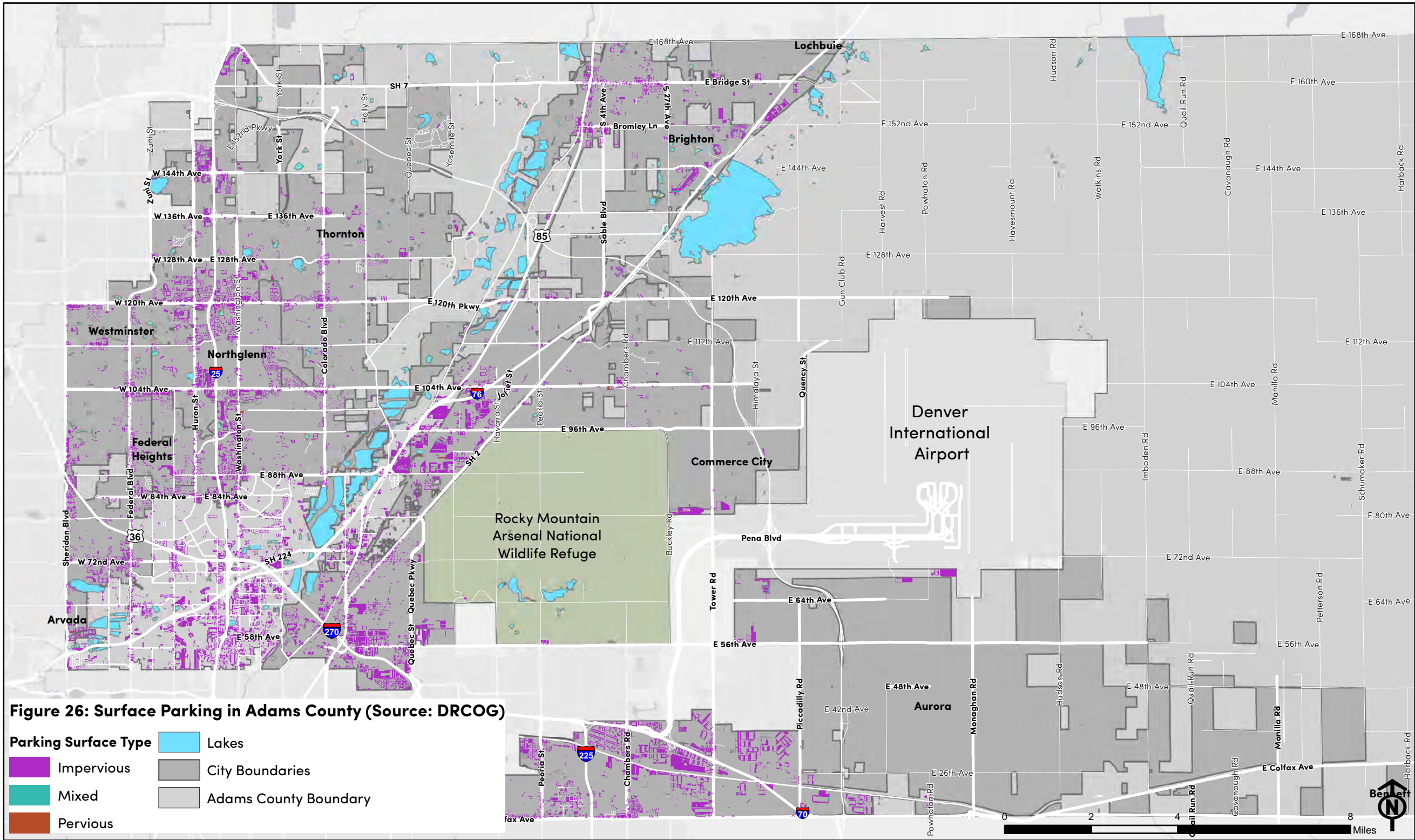
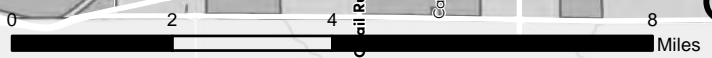
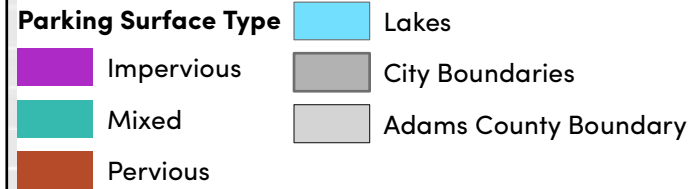


Figure 26: Surface Parking in Adams County (Source: DRCOG)



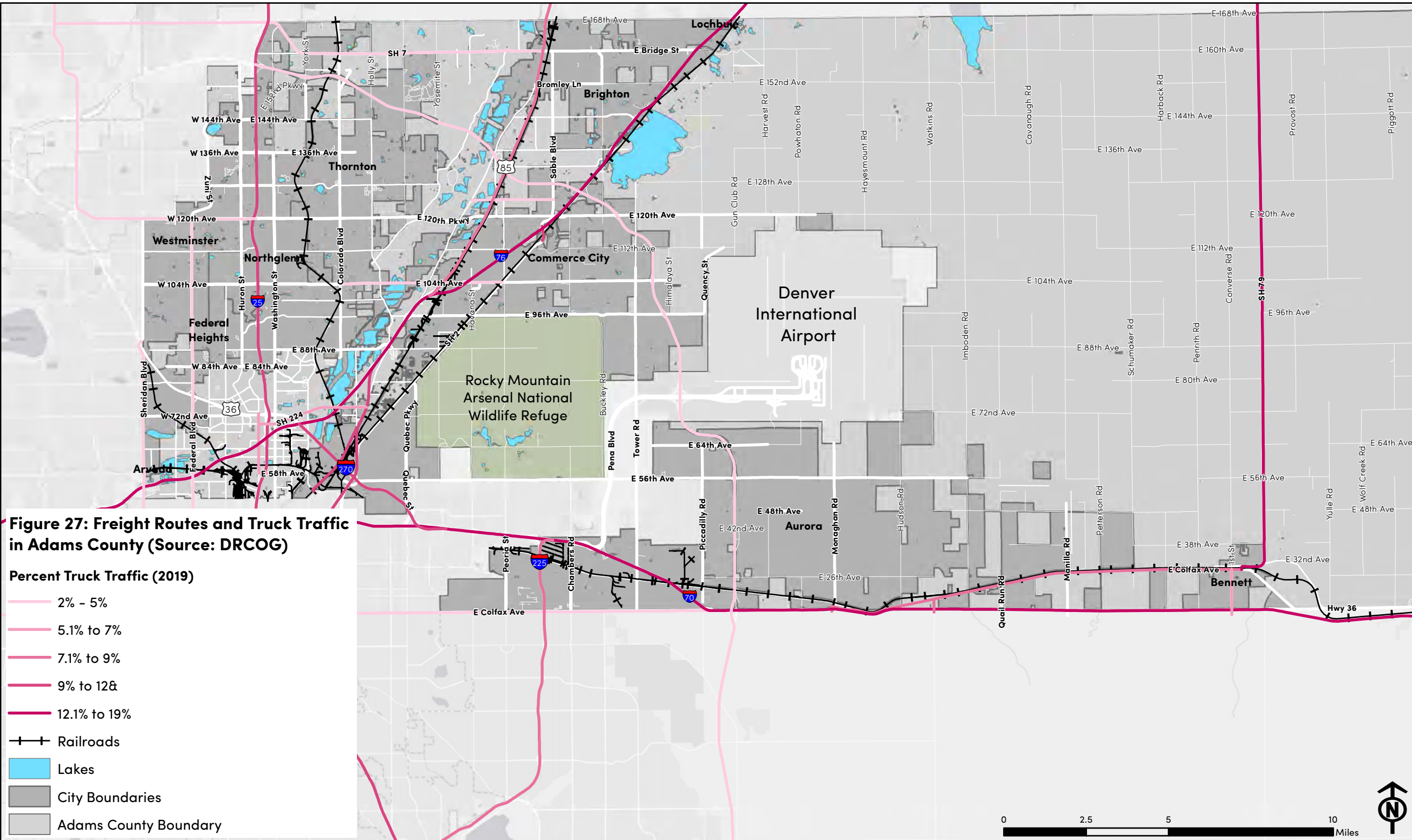


Figure 27: Freight Routes and Truck Traffic in Adams County (Source: DRCOG)

Percent Truck Traffic (2019)

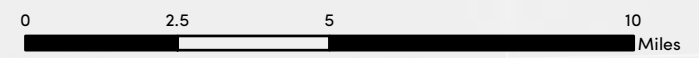
- 2% - 5%
- 5.1% to 7%
- 7.1% to 9%
- 9% to 12&
- 12.1% to 19%

—+— Railroads

— Lakes

— City Boundaries

— Adams County Boundary



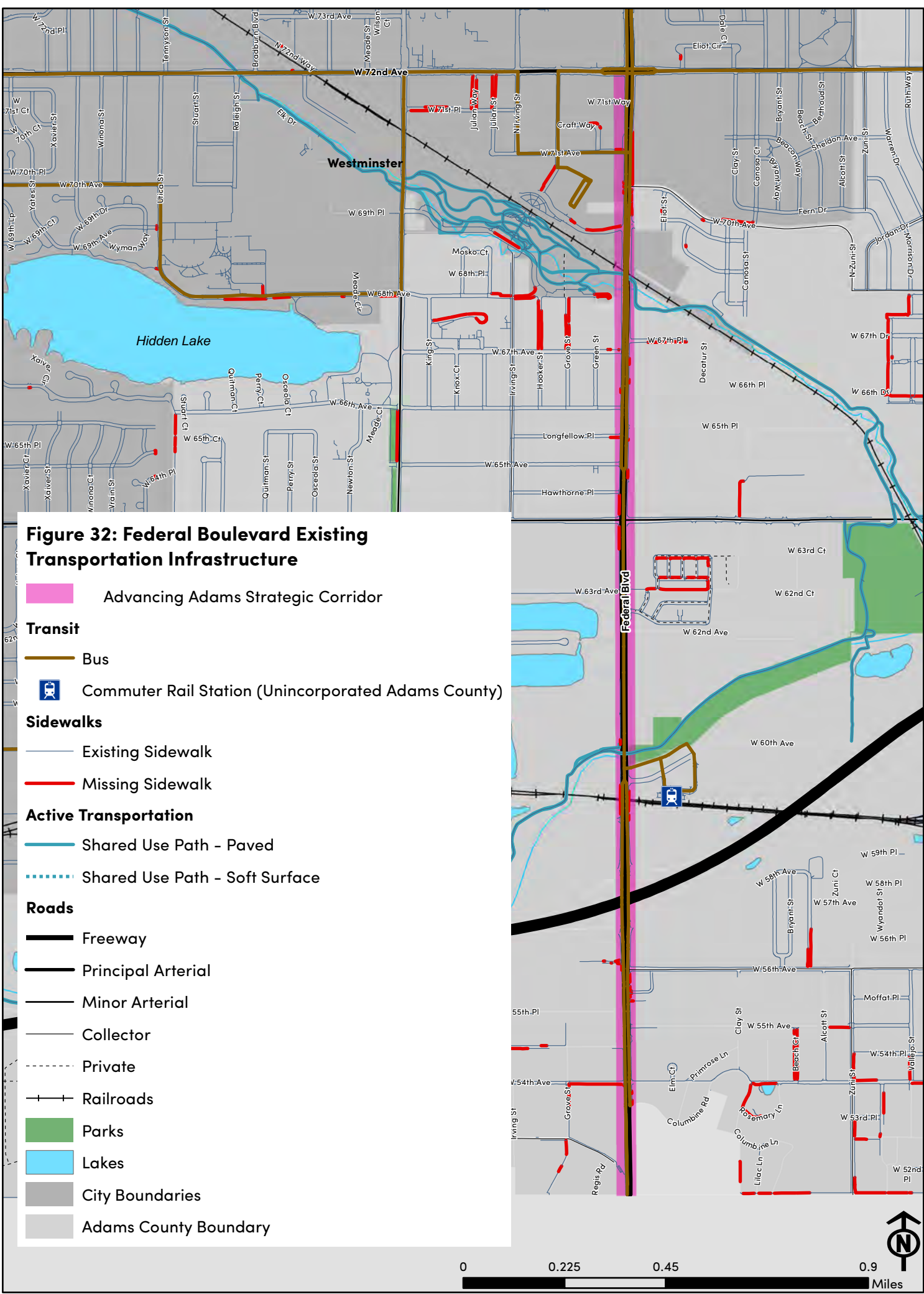


Figure 32: Federal Boulevard Existing Transportation Infrastructure

- Advancing Adams Strategic Corridor
- Transit**
- Bus
- Commuter Rail Station (Unincorporated Adams County)
- Sidewalks**
- Existing Sidewalk
- Missing Sidewalk
- Active Transportation**
- Shared Use Path - Paved
- Shared Use Path - Soft Surface
- Roads**
- Freeway
- Principal Arterial
- Minor Arterial
- Collector
- Private
- ++ Railroads
- Parks
- Lakes
- City Boundaries
- Adams County Boundary

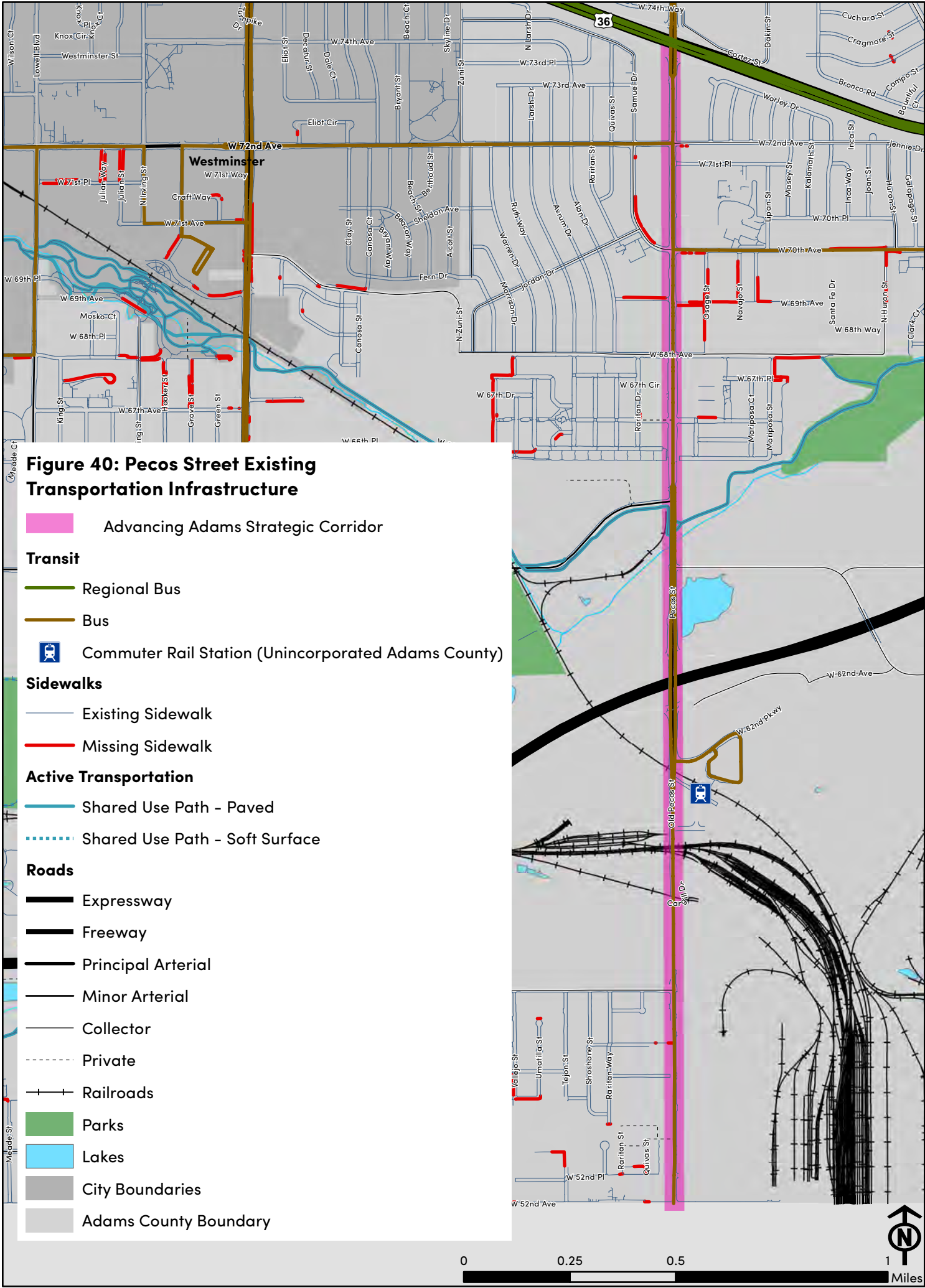
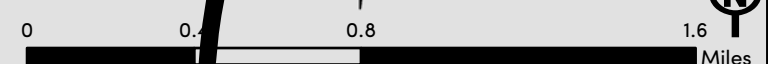
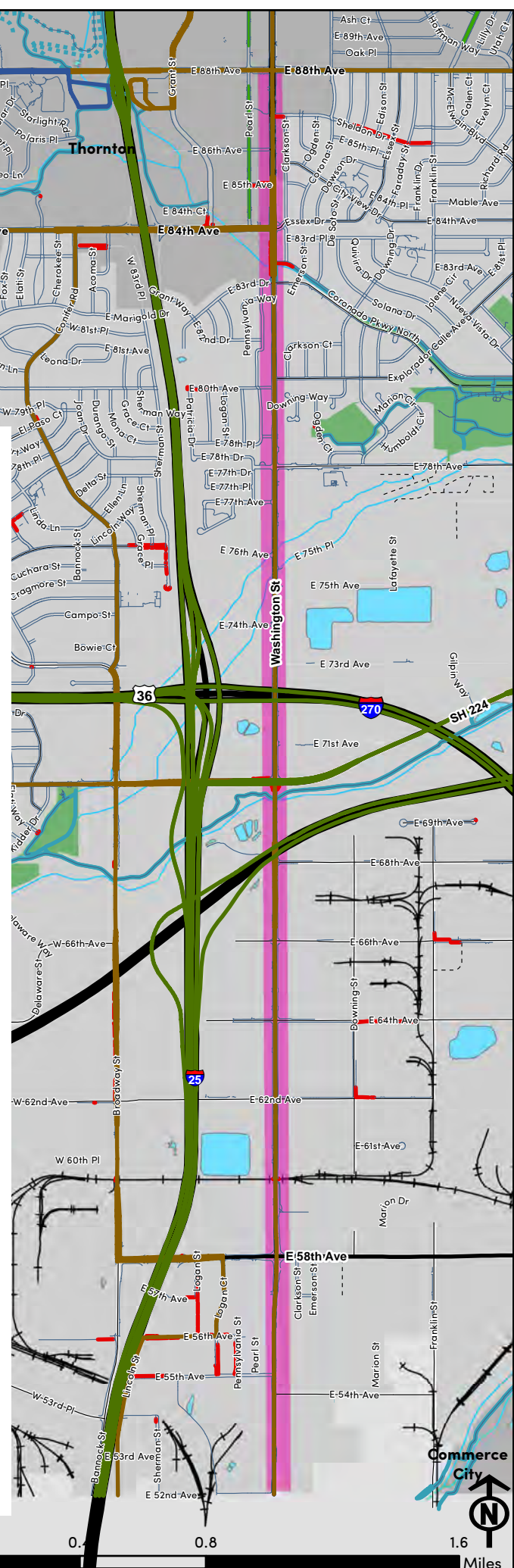


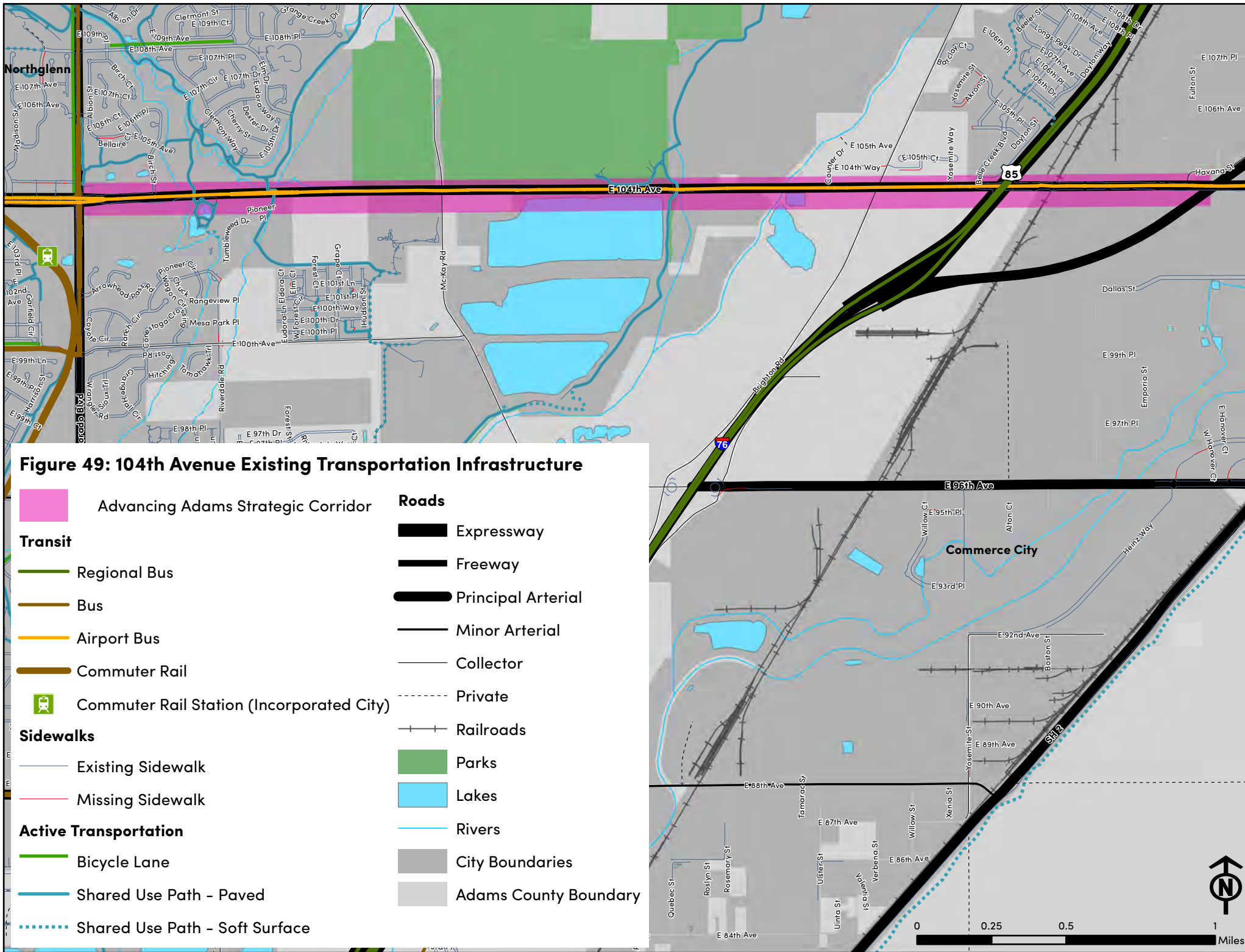
Figure 40: Pecos Street Existing Transportation Infrastructure

- Advancing Adams Strategic Corridor
- Transit**
- Regional Bus
- Bus
- Commuter Rail Station (Unincorporated Adams County)
- Sidewalks**
- Existing Sidewalk
- Missing Sidewalk
- Active Transportation**
- Shared Use Path - Paved
- Shared Use Path - Soft Surface
- Roads**
- Expressway
- Freeway
- Principal Arterial
- Minor Arterial
- Collector
- Private
- Railroads
- Parks
- Lakes
- City Boundaries
- Adams County Boundary

Figure 45: Washington Street Existing Transportation Infrastructure

- Advancing Adams Strategic Corridor
- Transit**
 - Regional Bus
 - FlexRide
 - Bus
 - Commuter Rail Station (Unincorporated Adams County)
- Sidewalks**
 - Existing Sidewalk
 - Missing Sidewalk
- Active Transportation**
 - Bicycle Lane
 - Shared Use Path - Paved
 - Shared Use Path - Soft Surface
- Roads**
 - Expressway
 - Freeway
 - Principal Arterial
 - Minor Arterial
 - Section Line Arterial
 - Collector
 - Private
 - Railroads
 - Parks
 - Lakes
 - City Boundaries
 - Adams County Boundary





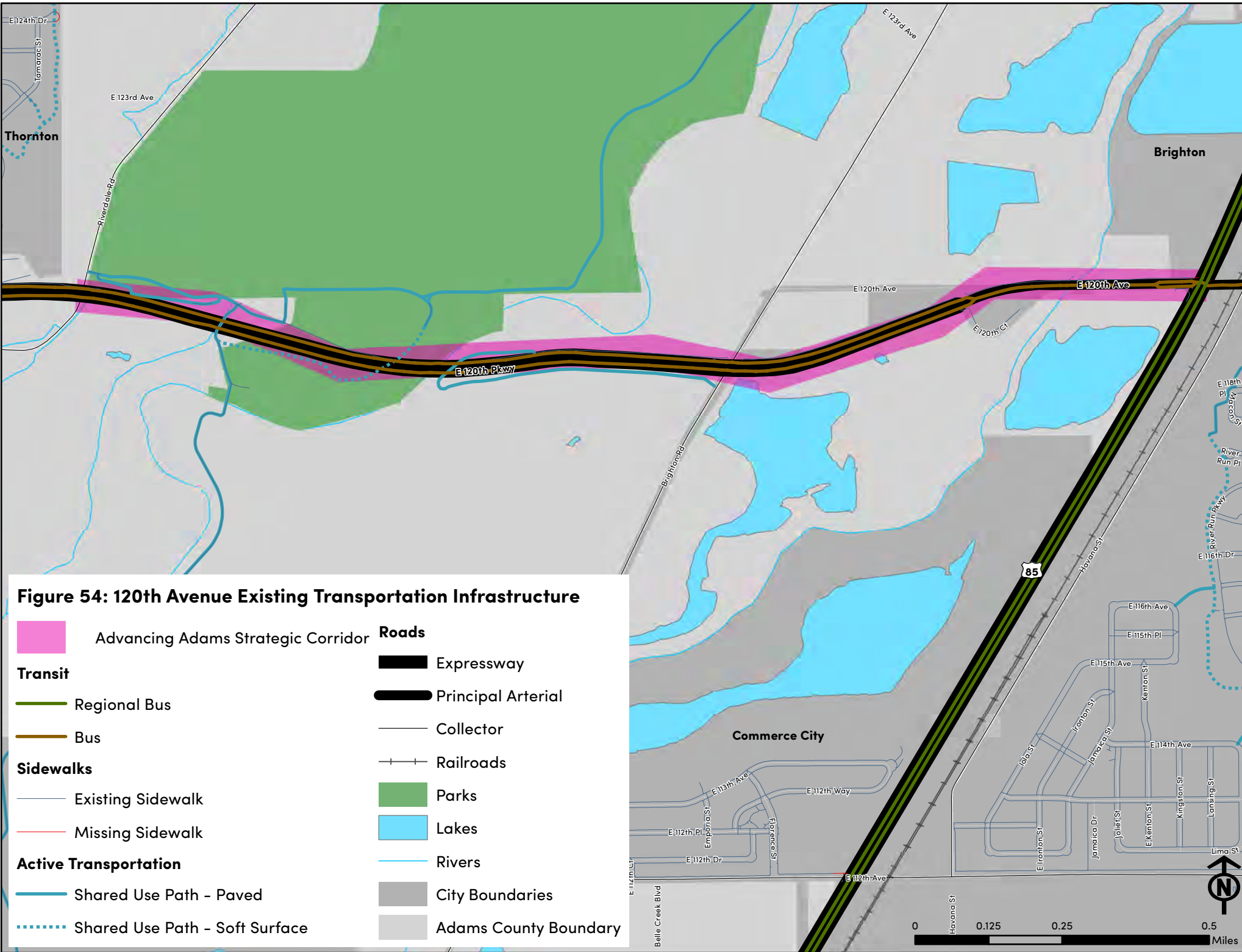







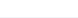










Figure 54: 120th Avenue Existing Transportation Infrastructure

- | | | | |
|--|------------------------------------|---|-----------------------|
|  | Advancing Adams Strategic Corridor | Roads | |
| Transit | |  | Expressway |
|  | Regional Bus |  | Principal Arterial |
|  | Bus |  | Collector |
| Sidewalks | |  | Railroads |
|  | Existing Sidewalk |  | Parks |
|  | Missing Sidewalk |  | Lakes |
| Active Transportation | |  | Rivers |
|  | Shared Use Path - Paved |  | City Boundaries |
|  | Shared Use Path - Soft Surface |  | Adams County Boundary |

